

# KENTALROOF CONFORT 560 T4 3kW (279564100PA)

## GENERAL DATA



### ROOF FAN WITH HINGED SYSTEM AND ABS COWL

#### MANUFACTURING FEATURES:

- ABS protection cowl easily removable for access to motor and impeller thanks to the integrated folding system. The ABS cowl is characterized by its toughness, resistance to impacts and is able to withstand extreme ambient temperatures. 100% of the ABS used in the this cowl is recycled.
- The design of the cowl with a **rounded shape** is specific to minimize the risk of water ingress due to rain.
- Equipped with a **hinged system** to open the motor-impeller set. This system allows easy maintenance and cleaning of the set without the need to disassemble the entire structure. The opening is possible in 2 inclinations: approximately 45° and 90°, as required by the intervention.
- Structure in anticorrosive galvanized steel and support frame for adaptation to the roof with anti-bird protection grid.
- High-performance, backward-curved blade (reaction) impellers designed to work without scroll. Self-cleaning system, built in galvanized steel treated with anti-corrosion.
- Standard asynchronous squirrel cage motor with IP-55 protection and Class F insulation. Standard voltages 230V 50Hz for single phase motors, 230/400V 50Hz for three phase motors up to 4kW & 400/690V 50Hz for higher powers and 400V 50Hz for 2 speed motors.

#### APPLICATIONS

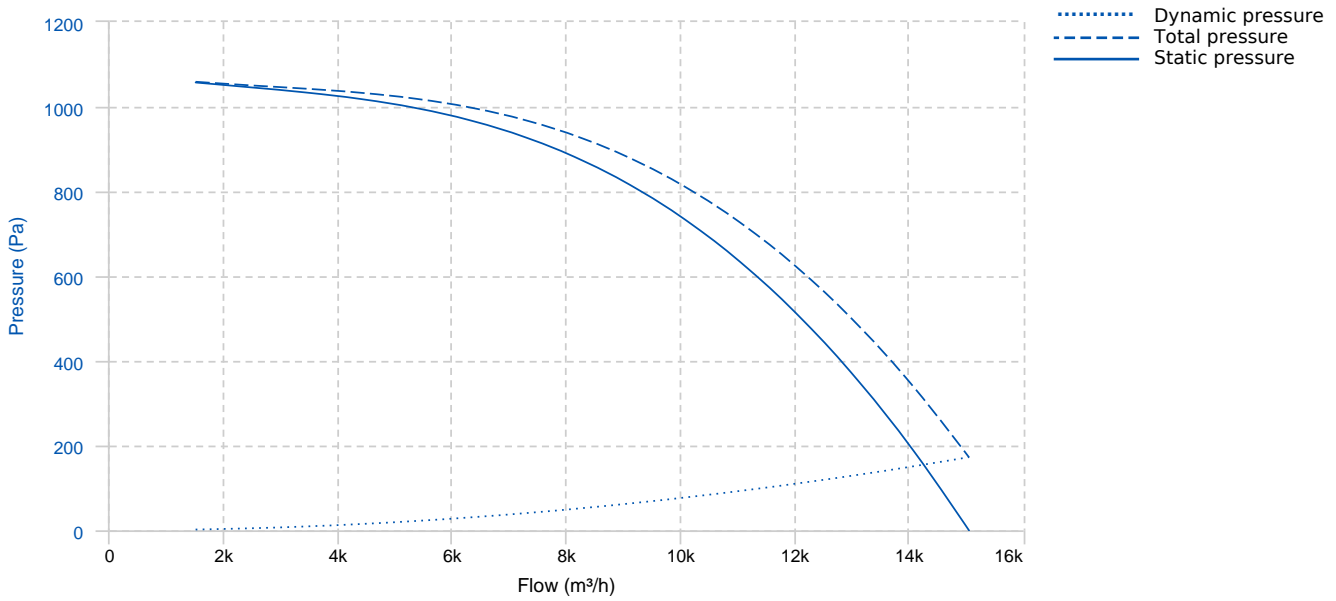
Designed for deck or roof mounting, they are indicated for:

- Smoke extraction.
- Air renewal in all types of buildings and industries.
- Maximum continuous working temperature: transported air 80°C, ambient 60°C to -25°C in three-phase motors.

#### UNDER REQUEST

- Special voltages.

## PERFORMANCE CURVE

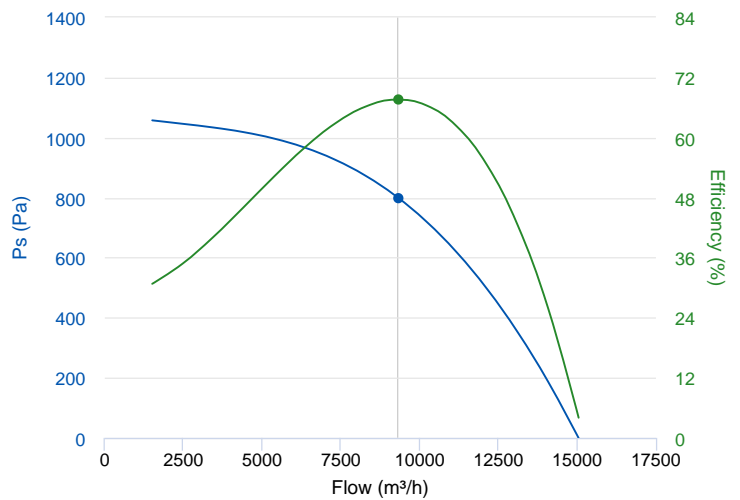


## TECHNICAL DATA

Fan							
RPM	1420	Approx. weight	104 kg	Max. Flow	15040 m³/h		
Motor							
Power	3 kW	RPM	1420	I max. (230V)	10,7 A	I max. (400V)	6,17 A
Size	100L	Approx. weight	34 kg	Efficiency (%)	87.7 %	FP	0.82

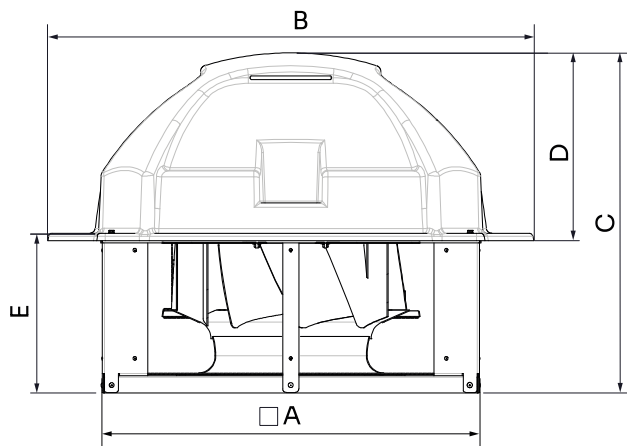
## ERP DATA

Fan data sheet		
Fan type	Unit for non-residential ventilation (LOT 6)	
Typology	Unidirectional	
reports.other	None	
Type of driver	None	
Motor power (kW)	3	
	Fan values	ERP Requirements 2018
Max. efficiency (%)	67.58	49.26
Effic. Heat recovery (%)	-	
Pabs (kW)	3.223	
Flow (m³/h)	9324.54	
Static pressure (Pa)	798.8	
Speed (m/s)	10.52	



	Fan values	ERP Requirements 2018
SFP (W/m3/s)	1244.36	

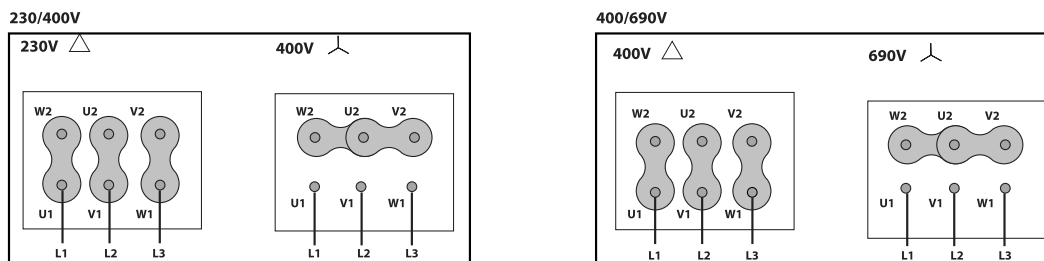
## DIMENSIONS



### Dimensions (mm)

A (int)	936	B	1227	C	849.6	D	470	E	397.6
---------	-----	---	------	---	-------	---	-----	---	-------

## WIRING DIAGRAM



## ACCESSORIES



**SAFETY SWITCH**  
**INT 25 3P A**  
**REF: INT253PA**



**CONNECTION FLANGE**  
**AC 560**  
**REF: 960003215**



**CIRCULAR SILENCER**  
**SIL-C 560/560**  
**REF: 960056056**



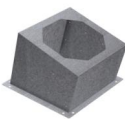
**CIRCULAR SILENCER**  
**SIL-C 560/1120**  
**REF: 960056112**



**CIRCULAR SILENCER**  
**SIL-CN 560/840**  
**REF: 961056084**



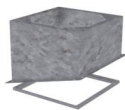
**CIRCULAR-CIRCULAR ANTI-VIBRATION FLANGE**  
**BAD 14 (Ø560)**  
**REF: 960003464**



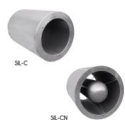
**INCLINED ROOF FAN SUPPORT**  
**BTI 915**  
**REF: A-50870915XX**



**KENTALROOF VERTICAL DISCHARGE**  
**KV KENTALROOF 560**  
**REF: KVKNTR560**



**BTI + AMC MOUNTED**  
**BTI+AMC 915**  
**REF: BTIAMC915XX**



**CIRCULAR SILENCER**  
**SIL-C 560/840**  
**REF: 960056084**



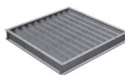
**CIRCULAR SILENCER**  
**SIL-CN 560/560**  
**REF: 961056056**



**CIRCULAR SILENCER**  
**SIL-CN 560/1120**  
**REF: 961056112**



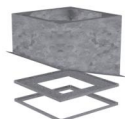
**FREQUENCY SPEED CONTROLLER**  
**SFC 400 III 8A \***  
**REF: SFC400III8**



**DEPRESSION DAMPER (HORIZONTAL or VERTICAL PLACEMENT)**  
**CMP-HUT 500x510**  
**REF: CMPHUT5051**

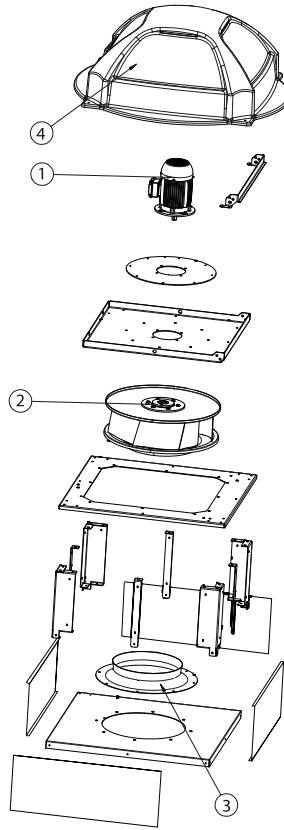


**BTI + ACMP MOUNTED**  
**BTI+ACMP 915**  
**REF: BTIACMP915XX**



**BTI + ACMP+AMC MOUNTED**  
**BTI+ACMP+AMC 915**  
**REF: BTIACMPAMC915XX**

**SPARE PARTS**



	Code	Model	Qty
1	721001170	MOTOR 3KW T4 B5 230/400V	x1
2	R-R63D1L560-28	IMPELLER R63D1L560x160x28 LG	x1
3	R-BAD560PK1	INLET CONE ED11P 560	x1
4	R-279564478	ROOF COWL KENTALROOF 450-500-560	x1